

RCM Manager

User Manual

Version 1.0 (2015-07-07)

Table of Contents

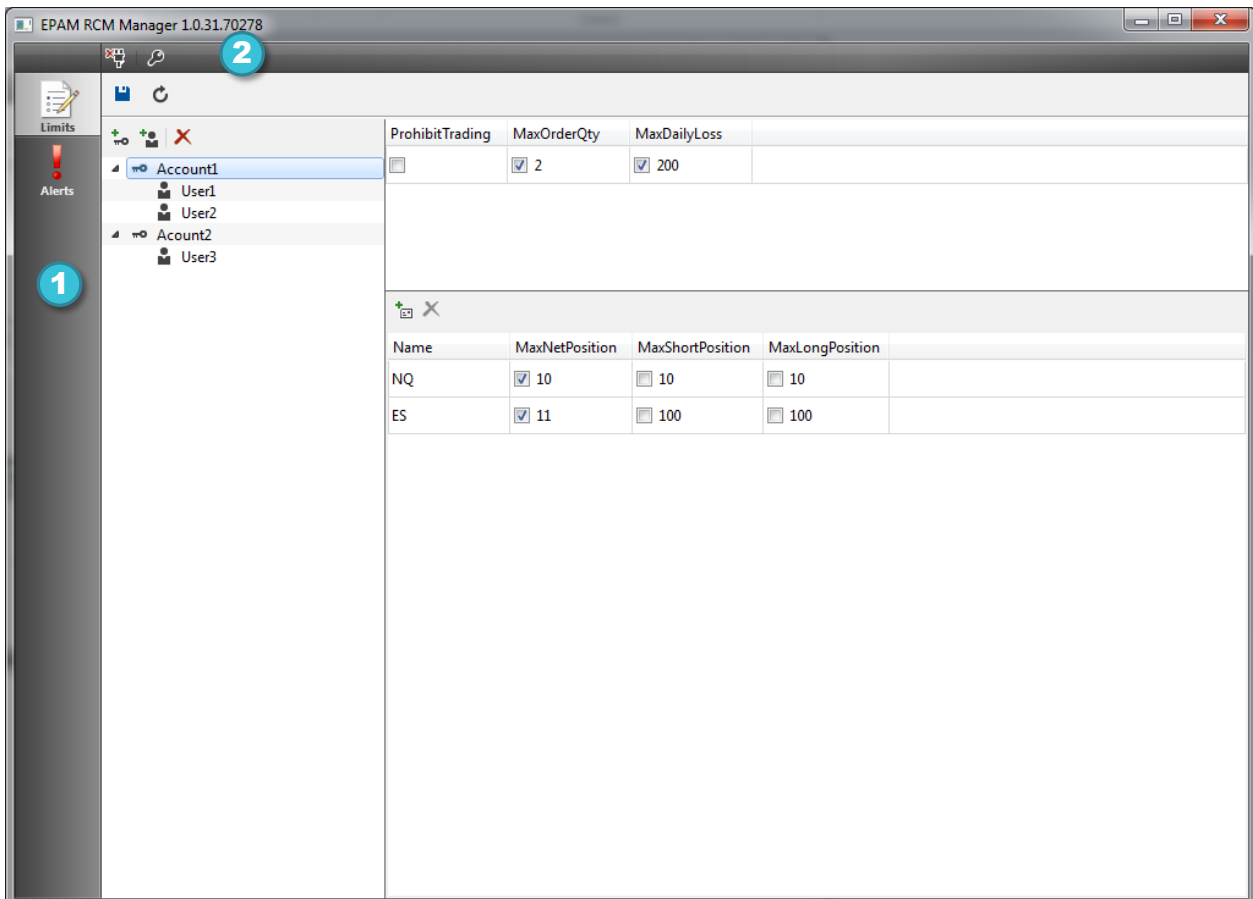
Overview.....	3
Main Window	3
Modes.....	3
Connecting to PTRCM.....	4
Disconnecting from PTRCM.....	4
Editing Pre-Trade Limits.....	4
Creating Account Level.....	5
Removing Account Level.....	5
Creating User Level.....	5
Removing User Level	6
Editing Level Limits	6
Editing Instrument Limits	6
Changing Name.....	6
Changing Values.....	7
Viewing Alerts.....	8
Rule Alerts.....	8
Common Alerts.....	8
Contact us	9

Overview

RCM Manager provides capability for changing pre-trade limits on and viewing alert messages received from PTRCM.

Main Window

When you start RCM Manager, it shows its main window and opens to the Limits mode by default.



In the main window, you can do the following:

- You can use the mode selector (1) to change to another RCM Manager mode.
- You can use the main toolbar (2) to connect to or disconnect from the PTRCM.


Modes

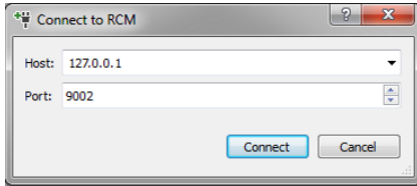
The mode selector allows you quickly switching between tasks such as editing pre-trade limits (1) and viewing alerts (2).



Connecting to PTRCM

Use the following steps to connect to the PTRCM:

- Click the  button on the main toolbar.
- Type an address of the PTRCM in the **Host** box.




- Type a port number in the **Port** box.
- Click **Connect**.



Note The PTRCM uses 9002 as a default listen port number.

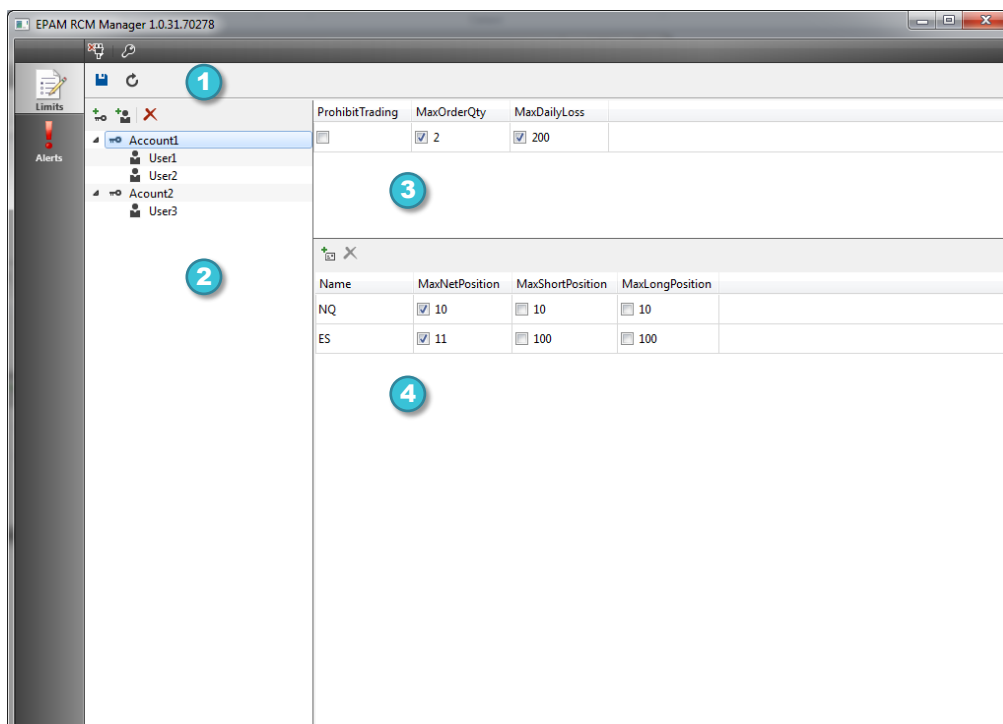
Disconnecting from PTRCM

To disconnect from the PTRCM, click the  button on the main toolbar.

Once the disconnection is done, RCM Manager disables editing pre-trade limits.

Editing Pre-Trade Limits

To edit pre-trade limits you need to switch to the Limits mode.





In this mode, you can do the following:

- Save and refresh pre-trade limits using the toolbar (1).
- Create and remove Levels in the Levels pane (2)
- Edit pre-trade level limits in the Level Limits (3).
- Edit pre-trade instrument limits in the Instrument pane (4).

Creating Account Level

Use the following steps to create a new account level:

- Click the  button
- Type a new unique account name.
- Click the  button to save your changes in the PTRCM.

The RCM Manager always creates a new account with one default user.

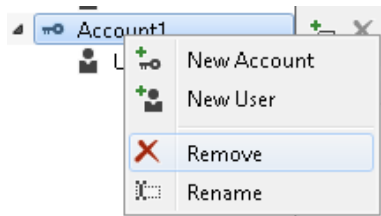



Important The new account level is applied after PTRCM restart only.

Removing Account Level

Use the following steps to remove an account level:

- Right-click the selected account, and then click **Remove**.




- Click the  button to save your changes in the PTRCM.

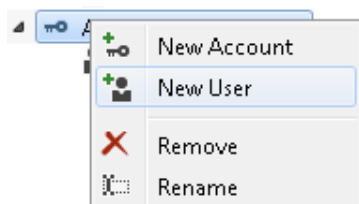



Note The account level is removed along with all its users.

Creating User Level

Use the following steps to create a user level:

- Right-click the selected account, and then click **New User**. You can also click the  button.



- Type a new unique user name.
- Click the  button to save your changes in the PTRCM.

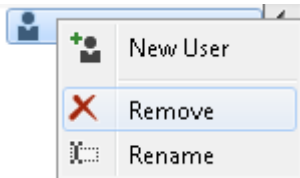



Important The new user level is applied only after PTRCM restart.

Removing User Level

Use the following steps to remove a user level:

- Right-click the selected user, and then click **Remove**.




- Click the  button to save your changes in the PTRCM.



Important The removed user level is applied only after PTRCM restart.

Editing Level Limits

Use the following steps to edit level limits:

- Select a level that you want to edit, in the Levels pane.
- Double-click a limit to start the edit in the Level Limits pane.
 - Press Enter to finish the edit. You can also click any-where in the Level Limits pane.
 - Press Esc to discard all changes.
- Select or clear the corresponding check box to turn the limit on/off.
- Click the  button to save your changes in the PTRCM.



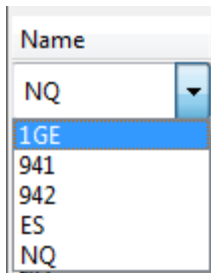
Important The updated level limit is applied immediately on PTRCM right after you save your changes.


Editing Instrument Limits

Changing Name

Use the following steps to edit an instrument name:

- Select a level that you want to edit, in the Levels pane.
- Double-click an instrument name in the Instrument pane.
 - In the Name box, select the name you want to use.




- Press Enter to finish the edit. You can also click any-where in the Level Limits pane.
 - Press Esc to discard all changes.
- Click the  button to save your changes in the PTRCM.



Important The new name of the instrument is applied immediately on PTRCM right after you save your changes.

Changing Values

Use the following steps to change an instrument limit:

- Select a level that you want to edit, in the Levels pane
 - Double-click an instrument limit to start the edit.
 - Type a value.
-
- Press Enter to finish the edit. You can also click any-where in the Instrument pane.
 - Press Esc to discard all changes.
 - Select or clear the corresponding check box to turn the limit on/off.
 - Click the  button to save your changes in the PTRCM.



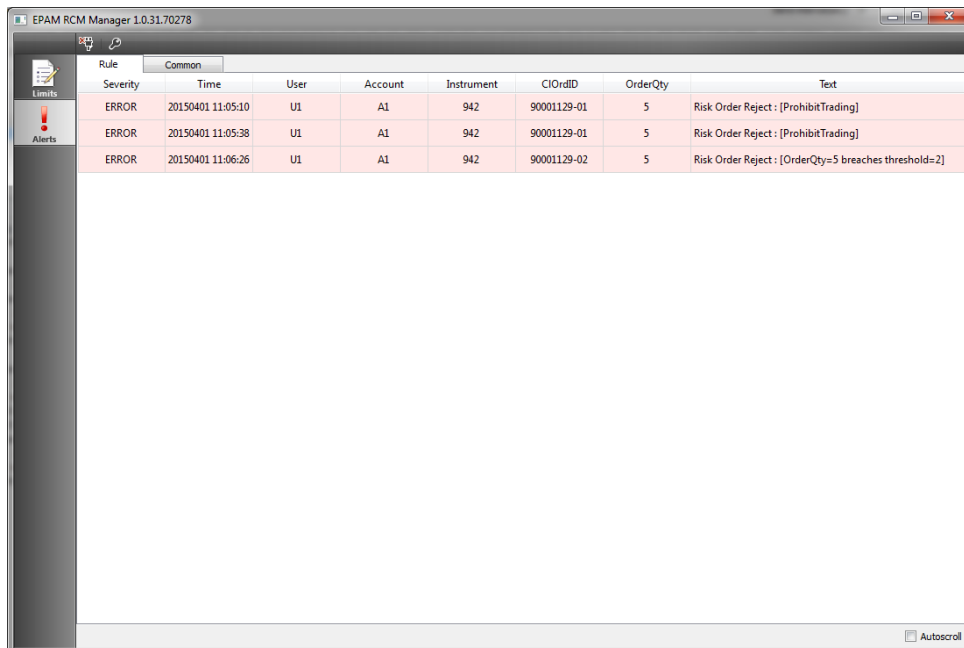
Important The updated instrument limits are applied immediately on PTRCM right after you save your changes.

Viewing Alerts

To edit alerts you need to switch to the Alert mode. In this mode, you can view two types of alerts in two corresponding tabs: Rule and Common.

Rule Alerts

The **Rule** tab shows alerts that PTRCM sends when checking one of pre-trade limits fails.

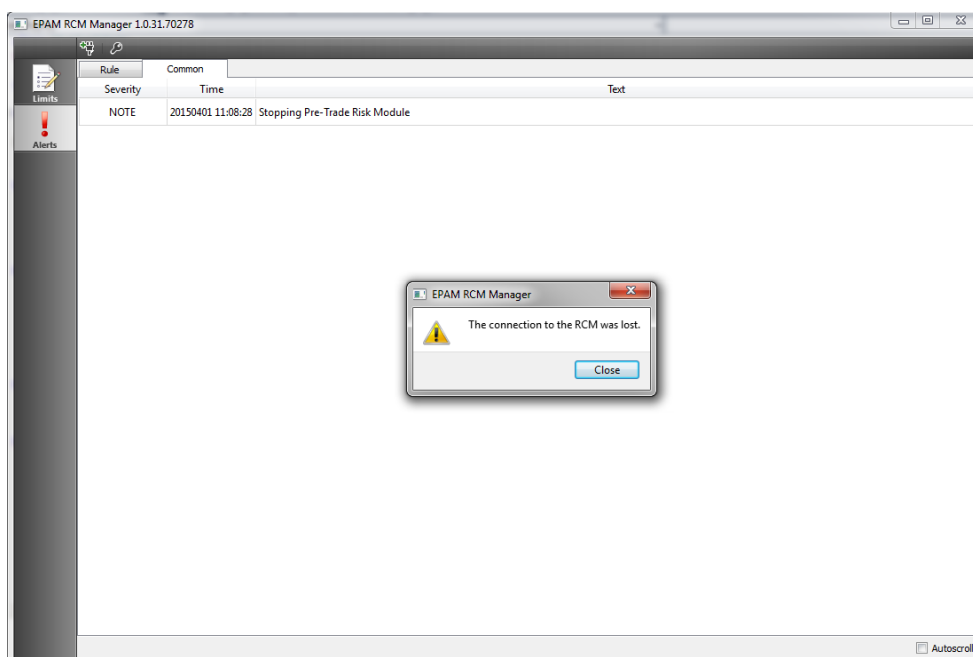


The screenshot shows the EPAM RCM Manager interface with the 'Alerts' tab selected. The 'Rule' sub-tab is active, displaying a table of alerts. The table has columns for Severity, Time, User, Account, Instrument, ClOrdID, OrderQty, and Text. Three error alerts are listed, all with a severity of 'ERROR' and a user of 'U1'. The first two alerts are for ClOrdID 90001129-01, and the third is for ClOrdID 90001129-02.

Severity	Time	User	Account	Instrument	ClOrdID	OrderQty	Text
ERROR	20150401 11:05:10	U1	A1	942	90001129-01	5	Risk Order Reject: [ProhibitTrading]
ERROR	20150401 11:05:38	U1	A1	942	90001129-01	5	Risk Order Reject: [ProhibitTrading]
ERROR	20150401 11:06:26	U1	A1	942	90001129-02	5	Risk Order Reject: [OrderQty=5 breaches threshold=2]

Common Alerts

The **Common** tab shows alerts that PTRCM sends when something important occurs.



Contact us

sales@btobits.com

Phone: +1-888-378-0666

Global Headquarters

US Client Support and Delivery Center

EPAM Systems, Inc

41 University Drive

Suite 202

Newtown, PA 18940

Phone: +1-267-759-9000

Fax: +1-267-759-8989